



Mount Hawke Academy

Head of School: Miss C Biddick

20th July 2021

Wednesday 8th September – Whole School Return

Dear Parents

We have worked carefully to consider how we will manage the new school year when everyone returns after the summer break, and this letter sets out the key information.

All children are expected to return to school on Wednesday 8th September. We still have detailed Risk Assessments and protocols in place to make Mount Hawke Academy as safe as possible, as well as being a place where our children can continue to flourish.

Drop Off and Pick Up Arrangements:

We are going to continue with most of our current ways of dropping off and collecting children as it gives a calmer, more settled and secure start and end to the day. We are going to continue to ask the children to come straight into their classes in the morning, but rather than having a staggered drop off, please feel free to drop your child/ren off at any time between 8.30 am, when the gates open, and 8.45 am, when the gates close. We will take the registers and start lessons at 8.45 am, so please do make sure that your child/ren are here by this time. Please help us in continuing to make drop off as quick as possible by saying goodbye to your child before you reach the yellow line at the top of the path, so that they are ready to walk up across the playground and straight into their classroom where their teachers will be waiting. The adult follows our one-way system out of the gate into Rodda's Road. Because the teachers need to be ready for the children for 8.30 am onwards, if you need to speak to your child's teacher, please call in at the office, or send an email or phone and the teacher will contact you as soon as they can.

At the end of each day, the one-way system will be in operation again. We will continue to open the gates just before 3.00 pm, and the children will be released to their adults at 3.00 pm. This is no longer staggered. Year Six continue to be able to walk home alone. If you have a child in a younger year group and you feel that you would like them to do this, please email us to let us know.

Uniform and Equipment – we expect our children to wear our school uniform. On PE days, we encourage all children to come to school wearing their school uniform PE kit, not football kit or non-school colours. Our uniform details are here - [Mount Hawke Academy Uniform](#). Your child's teacher will let you know which day this is in September. Please do send your child in with a labelled water bottle for use in class – only water please. You are welcome to send your child in with some healthy fruit or veg snacks for playtime (not crisps, chocolate, etc). Please remember that we are a nut free school.

We spend a lot of time outside too, even in the rain, so please make sure that your child comes with a coat. We will continue to have windows open for ventilation, so do make sure they have a sweatshirt or cardigan and they may want to wear a layer underneath.

T: 01209 890230

E: hello@mounthawke.org W: www.mounthawke.org

Mount Hawke Academy, Rodda's Road, Mt Hawke, Truro, Cornwall TR4 8BA

A Company Limited by Guarantee. An Exempt Charity
Registered in England & Wales - Company No. 07387540

Registered Office: Aspire Academy Trust, Unit 20, St Austell Business Park, St Austell, Cornwall PL25 4FD





Mount Hawke Academy

Head of School: Miss C Biddick

Wraparound - Breakfast Club & Playzone & Going Home Arrangements – if you have any wraparound requirement when we return in September, these need to be booked in advance via the booking form - [Wraparound Booking form 8th September](#) - and paid for via ParentPay. The Breakfast Club and Playzone booking screens are open in ParentPay - **Breakfast Club** and **Playzone**. You will need to pay for a minimum of 1 session in advance (Breakfast Club £3.50, Playzone £4.00 for 3-4pm), but it is preferable if you can pay for all the booked sessions at the same time. Any additional hours will be added to your account.

Clubs / Peripatetic Lessons – we will let you know what is available as we settle back into school.

Curriculum – after an initial welcome back to school, we will resume our regular learning, building on all the great work that everyone has done up until now. We will continue to identify and initiate any interventions needed, supporting learning in a variety of ways. We are still maintaining a broad and balanced curriculum, keeping all our subjects and topics going and continuing to make great use of My Personal Best in [PE](#) and [SCARF](#) in our PSHE curriculum. [Reading](#) with your child each night has huge benefits to your child's learning too, and as ever, we would appreciate you continuing to support your child with this.

Celebrations and Behaviour - as usual, our behaviour expectations are communicated clearly to all our children. Rewards continue to be primarily through the use of our Reward Tickets, which are collected in class, and celebrated each Friday, and our children will continue to be rewarded for specific, positive behaviours. We are very excited to go back to whole school assemblies in the hall each Friday to present our Celebration and Achievement Certificates.

Homework - we continue to encourage all homework to be completed, including continuing with Spelling Shed, Numbots and TT Rockstars. It is expected that children continue with their love of reading and read regularly at home.

Remote Learning - in the event of a partial (bubble closure) or full lock down, we will provide remote learning. This will be through Tapestry (EYFS) and Seesaw (KS1 and KS2). We have decided to move away from Google Classroom for KS2 and will ensure that the older children become familiar with Seesaw in the first few weeks of term.

Resources - children have their own labelled pen / pencil and other equipment to use, provided by us in a pencil case.

T: 01209 890230

E: hello@mounthawke.org W: www.mounthawke.org

Mount Hawke Academy, Rodda's Road, Mt Hawke, Truro, Cornwall TR4 8BA

A Company Limited by Guarantee. An Exempt Charity
Registered in England & Wales - Company No. 07387540

Registered Office: Aspire Academy Trust, Unit 20, St Austell Business Park, St Austell, Cornwall PL25 4FD





Mount Hawke Academy

Head of School: Miss C Biddick

Test and Trace – the school is actively engaged with the NHS's Test and Trace protocols. Should any parent, child or staff member display any symptoms of COVID-19, we would strongly encourage them to book a test. Tests can be booked through the NHS's testing and tracing website. Parents should now report to Test and Trace using the online form - **Positive test result for coronavirus (COVID-19) - NHS (www.nhs.uk)**. If the test comes back positive during school hours, please also phone us straight away. Should test results be negative and the person feels well with no symptoms similar to COVID-19, they can stop self-isolating. Other members of the household can stop isolating too. If someone tests positive, they should follow the government's 'Stay at home: guidance for households with possible or confirmed coronavirus (COVID-19) infection'. Should there be a localised outbreak, we will follow local health protection advice at the time.

Staff Testing – staff are taking Lateral Flow Tests twice a week through September, until a Government review. If a member of staff tests positive, we may have to close a bubble at very short notice, before school, on the morning of the closure. You will be informed by text so please keep an eye on your phone, especially before school on a Monday and Thursday morning.

We are so very excited to welcome everyone to school in September, both 'old families' and new, and filling our school with the buzz of getting everyone back together again. In the meantime, please have a wonderful and safe summer holiday.

Best wishes

Catherine Biddick
Head of School

T: 01209 890230

E: hello@mounthawke.org W: www.mounthawke.org

Mount Hawke Academy, Rodda's Road, Mt Hawke, Truro, Cornwall TR4 8BA

A Company Limited by Guarantee. An Exempt Charity
Registered in England & Wales - Company No. 07387540

Registered Office: Aspire Academy Trust, Unit 20, St Austell Business Park, St Austell, Cornwall PL25 4FD





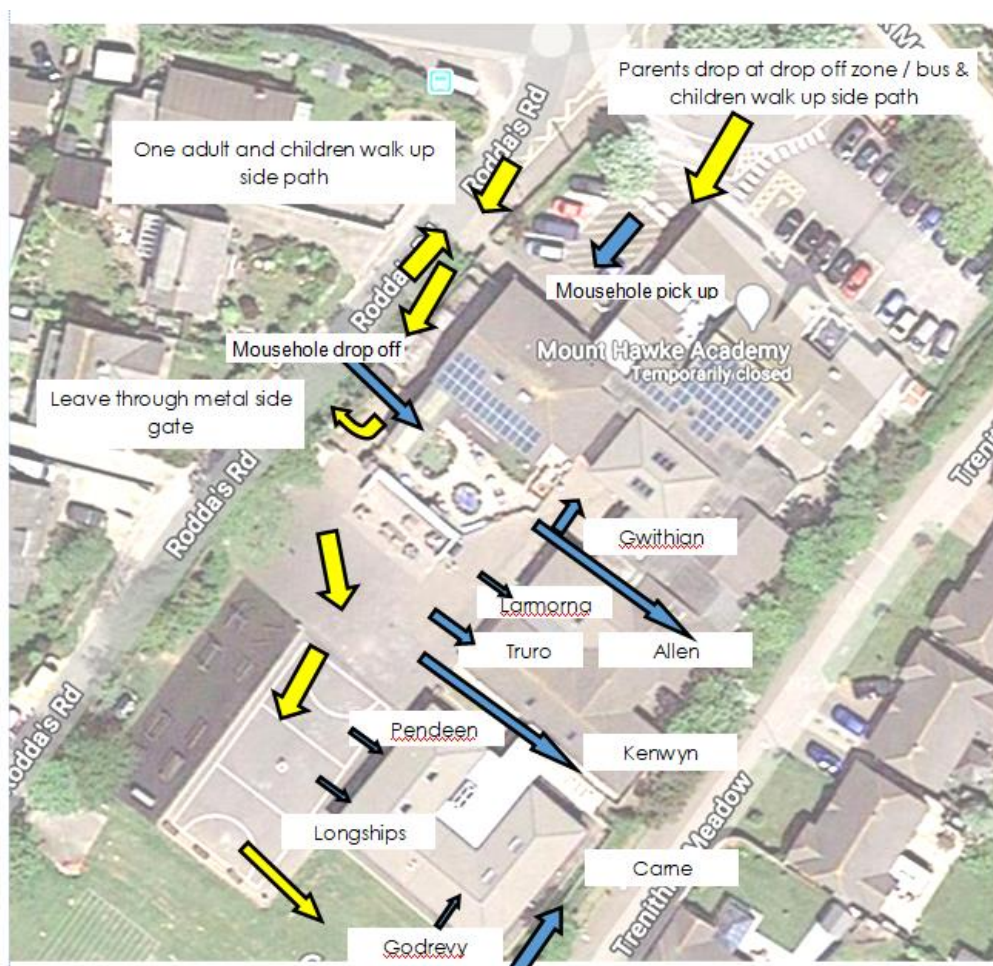
Mount Hawke Academy

Head of School: Miss C Biddick

Mount Hawke Academy - Class Entrances

At the start of the day, between **8.30 am and 8.45 am**, come in through the wooden gate in Rodda's Road, and make your way up the side path. At the top of this path, where an adult will be on duty, please say goodbye quickly. Children walk through the playground and straight into their classroom, where their teachers will be waiting. Parents make their way out of the metal side gate into Rodda's Road.

At **3.00 pm**, one adult collects their child/ren from their classroom door (or meeting point).



Blue Arrows - Entry to Classes - all classes enter through class doors except Gwithian, Allen & Kenwyn who go through corridor doors.

T: 01209 890230

E: hello@mounthawke.org W: www.mounthawke.org

Mount Hawke Academy, Rodda's Road, Mt Hawke, Truro, Cornwall TR4 8BA

A Company Limited by Guarantee. An Exempt Charity
Registered in England & Wales - Company No. 07387540

Registered Office: Aspire Academy Trust, Unit 20, St Austell Business Park, St Austell, Cornwall PL25 4FD

